

**Anton Bauer**®

**One World. One Smart Choice.™**



**ElightZ™**

Camera lighting System

Owner's Manual  
Read Before Using

# ELIGHTZ™ INSTRUCTIONS - READ BEFORE USING

---

## FOR SHOE TYPE MOUNTING OF THE ELIGHTZ TO CAMERA:

1. Attach the ElightZ™ to camcorder shoe and secure by rotating the blue wheel.
2. Plug ElightZ™ cable into ElipZ™ 10k battery, then the camera's ElipZ™ cable adapter may be plugged into the ElightZ™ Powerplug connector.

## FOR STUD MOUNT ONLY:

1. To attach ElightZ™ by stud mount, unscrew shoe mount entirely, separate blue shoe portion from threaded rod by rotating blue shoe off threads.
2. Screw threaded rod into camcorder's handle stud hole and secure with the Allen wrench provided.
3. Attach the ElightZ™ to stud and secure by rotating blue wheel.
4. Plug Elightz™ cable into ElipZ™ 10k battery, then the camera's ElipZ™ cable adapter may be plugged into the ElightZ's™ Powerplug connector.
5. Press the rocker switch to turn the ElightZ™ power on or off.



ElightZ Powerplug

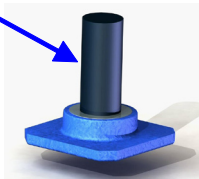


Diffusion Holder



Shoe & Stud Mount

Threaded rod



## CHANGING BULBS

---

- ElightZ™ comes standard with a 10 watt bulb (Model: EL10). Other bulbs are available separately.
- To change the bulb, wait for light to cool. Then, using thumb and index finger gently press the side grill areas of the ElightZ™ head module and the diffusion holder will release.
- Remove bulb by holding outer edges and pulling straight outward.
- Insert new bulb gently, making sure the bulb pins enter the socket straight.
- Reinstall the diffusion holder and the spring loaded bulb socket will secure and center the bulb.

## MOUNTING SPUN OR FILTERS

---

- MATCH GEL MOUNTING TABS ON DIFFUSION HOLDER

# LIMITED WARRANTY

This one (1) year limited warranty for the product specified in this document is given by Anton/Bauer, Inc. ("Anton/Bauer"), 14 Progress Drive, Shelton, Connecticut 06484. If you have any questions regarding product applications, product specification, or to obtain warranty service on this or any Anton/Bauer product, contact the Anton/Bauer Customer Support Group or the company at the address below.

**IMPORTANT: WARRANTY REGISTRATION CARD MUST BE MAILED WITHIN 30 DAYS OF PURCHASE TO QUALIFY FOR THIS WARRANTY.** Warranty registration must be supplied to Anton/Bauer. Anton/Bauer will warranty the Product only against defects in material and workmanship for a period of one (1) year from the date of purchase, in accordance with the terms set forth below and then, only if the Product is used only in conjunction with battery and/or charger products manufactured and sold by Anton/Bauer.

This warranty shall be effective only if Anton/Bauer receives notice of such defects in materials or workmanship during the period of the warranty. The liability of Anton/Bauer hereunder is expressly limited to a claim for repair or replacement of the Product or as otherwise stated herein at Anton/Bauer's sole discretion. Notice of any claim under this warranty shall be delivered to Anton/Bauer during the period of the warranty and the Product should be returned with its packaging promptly, at purchaser's expense, to an Anton/Bauer Customer Support Center or to the address above. Upon receipt of the Product and a record of your compliance with the conditions of this warranty, Anton/Bauer will repair or replace the Product and return it to you, or issue a credit, as applicable.

THIS WARRANTY DOES NOT APPLY TO AND IS VOID IN THE CASE OF DEFECTS OR DAMAGE RESULTING FROM ACCIDENTS, DISASTER, NEGLIGENCE, MISUSE, IMPROPER INSTALLATION, IMPROPER OR UNAUTHORIZED SERVICE OR MAINTENANCE, UNAUTHORIZED REPLACEMENT PARTS OR ATTACHMENTS; OR DYSFUNCTION OR MALFUNCTION OF, OR CAUSED BY, ANY OTHER PRODUCT OR DEVICE. Misuse includes any use of the Product in other than its intended application, including the use of this Product with any battery or charger product not manufactured by and/or specified by Anton/Bauer. This warranty does not cover, and Anton/Bauer assumes no responsibility for, any equipment or devices used in conjunction with the Product.

ANTON/BAUER DISCLAIMS ANY LIABILITY FOR CONSEQUENTIAL DAMAGES FOR BREACH OF ANY WRITTEN OR IMPLIED WARRANTY OF THE PRODUCT. UNDER NO CIRCUMSTANCES WILL ANTON/BAUER BE RESPONSIBLE FOR ANY SPECIAL, INCIDENTAL OR CONSEQUENTIAL DAMAGES.

This Warranty is to be construed and enforced in accordance with the law of the State of Connecticut, including the provisions of the Uniform Commercial Code as adopted and from time to time amended in the State of Connecticut, and not the Convention for the International Sale of Goods. This choice of Connecticut law is exclusive of any Connecticut law that would require reliance on any law foreign to Connecticut. Should any action of law or in equity be brought by any person under this Warranty, such action shall be brought only in the

United States District Court for the District of Connecticut, or in any Superior Court in Fairfield County, Connecticut, USA. Some states do not allow limitations on how long a warranty lasts, so the time period limitation herein may not apply to you. Some states do not allow the exclusion or limitation of incidental or consequential damages, so the above limitation or exclusion may not apply to you. This warranty gives you specific legal rights and you may have other legal rights which vary from state to state.

Use of unauthorized equipment in conjunction with Anton/Bauer products constitutes misuse under our warranties and may limit or void those warranties. Anton/Bauer does not authorize, condone, recommend, or otherwise assume any liability or responsibility resulting from the use of any battery, charger or accessory made by Anton/Bauer manufacture with any battery, charger or accessory not manufactured, produced or sold by Anton/Bauer. Anton/Bauer only authorizes the use of original Anton/Bauer product with this product. Use only original Anton/Bauer equipment with this product.



The following are trademarks of Anton/Bauer, Inc.:

Anton/Bauer, Anton/Bauer logo and parallelogram design, Aspekt, Automatique, DataTap, DIONIC, Elipz, Egripz, Elightz, Essentialz, Gold Mount, HubZ, HyTRON, Impac, Interactive and design, LifeSaver, Logic Series, Logic Series Logo, Maxx man logo design, Nexus, PowerStrap, Proformer, Probe, ProPac, RealTime, Satelight, Snap-On, Stasis, Stasis Flex, Tandem, TrimPac, Ultrakit, Ultralight, "One World. One Smart Choice", "The power behind the best cameras capturing the best images in the world.", "The quality standard of the video industry", "The worldwide standard", and "There should always be choices. It makes it easier to recognize the best."

Lexan is a registered trademark of G.E. Company Corp.

Cordura is a registered trademark of E.I. duPont de Nemours

**Anton/Bauer, Inc.**

World Headquarters  
14 Progress Drive, Shelton, CT U.S.A.  
Tel (203) 929-1100 or (800) 541-1667  
Fax (203) 929-9935  
support@antonbauer.com

**Anton/Bauer Europe, B.V.**

Eurode Business Center, Eurode - Park 1-2  
6461KB Kerkrade, The Netherlands  
Tel (+31) 45 5639220  
Fax (+31) 45 5639222  
eurosupport@antonbauer.com

**Anton/Bauer, Inc. - Singapore Office**

6 New Industrial Road, # 02-02 Hoe  
Huat Ind. Bld., Singapore 536199  
Tel (+65) 62975784  
Fax (+65) 62825235  
asia@antonbauer.com

[www.antonbauer.com](http://www.antonbauer.com)